

1/31/21

**For more information, contact:**Kali Bertucci, Director of Sales and Marketing  
[kbertucci@brookshiregroceryarena.com](mailto:kbertucci@brookshiregroceryarena.com)

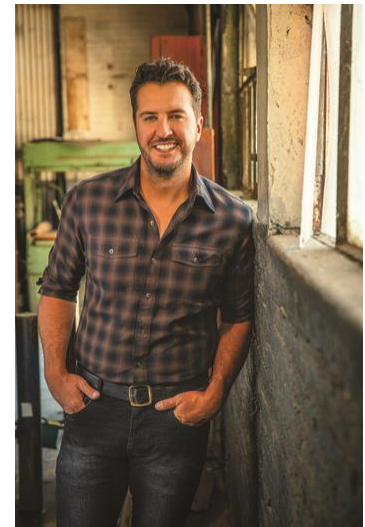
## Luke Bryan: Raised Up Right Tour coming to the Brookshire Grocery Arena!

**Bossier City- January 31, 2022** – Five-time Entertainer of the year **Luke Bryan**, who in his career has played sold-out shows for 12+ million fans inclusive of nearly 40 stadium concerts, Spring Break shows, Farm Tours and seven sold-out Crash My Play destination concerts, is revealing the details of his **RAISED UP RIGHT TOUR**. The tour will launch on June 9 in Charleston, West Virginia featuring **Riley Green, Mitchell Tenpenny** and **DJ Rock** and playing 30+ cities before wrapping in late October. Promoted by Live Nation, **tickets go on sale this Friday, February 4 at 10am local time at [Lukebryan.com](http://Lukebryan.com)**.

“My favorite place to be is on stage performing to country music fans,” said Luke. “So thankful every night when I walk out on that stage and know you are there to have a blast along beside me. It never gets old!”

Ticket presale for Luke’s fan club members begins Tuesday, February 1 at 8am local time through Thursday, February 3 at 5pm local time. For details go [HERE](#). Citi is the official card of the **RAISED UP RIGHT TOUR**. Citi cardmembers will have access to presale tickets beginning Wednesday, February 2 at 10am local time until Thursday, February 3 at 10pm local time through the Citi Entertainment program. For complete presale details visit [www.citientertainment.com](http://www.citientertainment.com).

The tour takes its name from the chorus of Luke’s current smash single “Up,” which is the sixth single from Luke’s #1 debuting **BORN HERE LIVE HERE DIE HERE** album. Watch the “Up” video [HERE](#).



Luke Bryan

Tickets on sale: February 4<sup>th</sup>, 2022 @ 10:00AM  
<https://www.ticketmaster.com/event/1B005C3E27087D28>

###

### **About Brookshire Grocery Arena**

Since opening its doors in the late fall of 2000, Brookshire Grocery Arena has been on the map as one of the top entertainment destinations in the South. Located on the banks of the Red River in Bossier City, LA, Brookshire Grocery Arena is a 270,000 square foot facility capable of hosting up to 14,000 patrons. The venue features world-class concerts, family shows, ice-skating shows, motor sports, rodeos, conventions, religious and community events, as well as other special events.

### **About ASM Global**

ASM Global is the world’s leading venue management and services company. The company was formed by the combination of AEG Facilities and SMG, global leaders in venue and event strategy and management. The company’s elite venue network spans five continents, with a portfolio of more than 300 of the world’s most prestigious arenas, stadiums, convention and exhibition centers, and performing arts venues. From Aberdeen to Anchorage, and Sydney to Stockholm, its venues connect people through the unique power of live experiences.

ASM Global's diverse portfolio of clients benefit from the company's depth of resources and unparalleled experience, expertise and creative problem-solving. Each day, the company's 61,000 passionate employees around the world delivers locally tailored solutions and cutting-edge technologies to deliver maximum results for venue owners, and operations, and amazing experiences for guests. By consistently looking for new ways to envision, innovate and empower the spaces and places that bring people together, ASM Global elevates the human spirit while delivering the highest value for all stakeholders. For more information, please visit [www.asmglobal.com](http://www.asmglobal.com).